



Mach-SmartView™

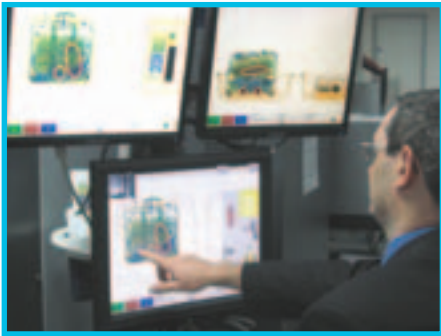


Checkpoint Remote Search Facility

- Reduces queue waiting times and congestion
- Improves operational efficiency
- Effective threat targeting in passenger baggage
- Automates process between screening and search activities
- Provides audit trail facility for threat items
- Enhances overall public safety, security and service
- Incorporates the ability to Security Profile Passengers
- Ability to determine the usage by airline of the checkpoint system
- Ability to provide disclaimed item pickup service
- Approved for use by UK airports

Mach-SmartView™

Secure Visualisation and Audit Trail



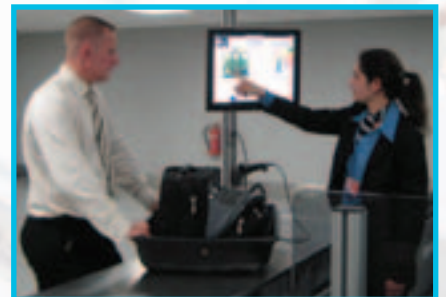
- > Mach-SmartView™ enables the screener to tag suspected threat items on the X-ray image and photo image of the tray content. On completion of the X-ray process the tagged images are stored.

- > On arrival at the search table the tray is scanned and the associated images are displayed to the searcher to validate. This automated process eliminates the need for verbal instructions between the operators, avoiding communications errors and delays in screening and searching processes.



- > As part of the search table process Mach-SmartView™ can log data from passenger boarding pass for validating service agreements between airport and airlines.

- > The visual location of the threat item is quickly identified for the passenger to disclaim or the searcher to clear. The searcher ends the process by entering the results on the Mach-SmartView™ monitor.



- > Mach-SmartView™ is designed to be integrated with the world's leading manufacturers of checkpoint X-ray machines and can be configured for local or remote screening.

Mach-SmartView™ is a hardware independent and therefore future proof solution. The modular concept and server client architecture means that future expansion is a simple matter of adding search clients to the Mach-Secure™ network.

- > Mach-SmartView™ addresses the security requirements and problems of the transport industry globally and satisfies the objectives with a totally integrated system that offers fast, efficient, secure and accurate searching of threat baggage.

With consumer satisfaction being of paramount importance, it has been recognised that the passenger experience is significantly enhanced when presented with the controlled, securely managed and efficient environment that Mach-SmartView™ solution guarantees.

Growing numbers of passengers mean that the challenges we face today will be greater tomorrow - Mach-SmartView™ is a scalable solution which is designed to cope with major increases in passenger traffic.

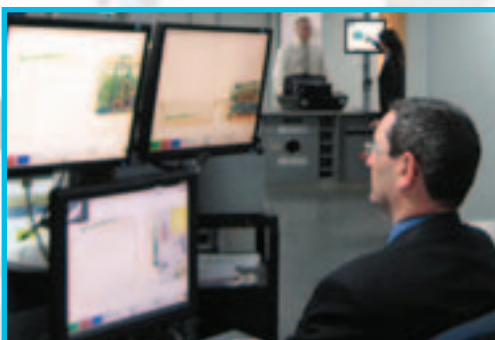


- > Mach-SmartView™ search monitor can be configured to multiple screening machines providing an efficient and cost effective solution at a shared search table.

- > Mach-SmartView™ visual screen aides and multi language questionnaire, significantly enhances passenger experience and throughputs.



- > Both screener & searcher are logged on to Mach-SmartView™ enabling suspected threat item selection and search validation data to be recorded and associated to operatives.



- > Mach-SmartView™ time and date stamps screener and searcher events, together with all tray content photos and X-ray images. This data provides a complete audit trail throughout the outbound checkpoint for management statistics in Mach-SEMS®.

| Date | Time | Location | Status | Quantity | Item Name |
|------------|-------|----------|--------|----------|------------------|
| 2010-01-01 | 10:00 | 101 | OK | 1 | Handbag |
| 2010-01-01 | 10:05 | 102 | OK | 1 | Backpack |
| 2010-01-01 | 10:10 | 103 | OK | 1 | Roll-on suitcase |
| 2010-01-01 | 10:15 | 104 | OK | 1 | Handbag |
| 2010-01-01 | 10:20 | 105 | OK | 1 | Backpack |
| 2010-01-01 | 10:25 | 106 | OK | 1 | Roll-on suitcase |
| 2010-01-01 | 10:30 | 107 | OK | 1 | Handbag |
| 2010-01-01 | 10:35 | 108 | OK | 1 | Backpack |
| 2010-01-01 | 10:40 | 109 | OK | 1 | Roll-on suitcase |
| 2010-01-01 | 10:45 | 110 | OK | 1 | Handbag |

Mach-Secure™ - Integrated Checkpoint Security Solutions

- > The Mach-Secure™ suite of innovative products and systems has been specifically designed for security checkpoint applications. These dedicated products and systems address the day to day operational and financial challenges faced by today's modern businesses. The Mach-Secure™ suite of products and systems will increase the overall efficiency of a total security checkpoint application whilst lowering the operational costs. For the first time Mach-Secure™ introduces a totally integrated system solution to the checkpoint security environment.

Mach-Secure™ Checkpoint Products:

- Mach-SmartLane™ - Automated Tray Handling
- Mach-SmartView™ - Remote Search Facility
- Mach-SmartGate™ - Passenger Automated Gates
- Mach-SmartVision™ - Integrated CCTV
- Mach-SmartSense™ - Personnel Tracker
- Mach-SmartAccess™ - Personnel Access Control
- Mach-SEMS® - Security Efficiency Management System

The Mach-Secure™ suite of products and systems offers a coherent, structured and centrally controlled solution to provide the security checkpoint of the future.



MacDonald Humfrey (Automation) Ltd.

Progress Manor
Bolton Road
Luton, Bedfordshire LU1 3HY
United Kingdom

t +44 (0) 1582 405741

f +44 (0) 1582 453237

e sales@mhaltd.co.uk